



Trimoterm roofing novelties



Insulated flatroof panels - Trimoterm SRV

Flatroof panels - Trimoterm SRV are used for roof cladding of industrial, storage, office and commercial facilities. The panels ensure excellent thermal and sound insulation.

Benefits

- minimum slope of 2%
- time and cost efficiency thanks to the simple and quick construction
- possibility to lay panels within a minimum of a 15-metre radius (with SRV 60)
- panel thickness from 60 to 200 mm
- sustainability

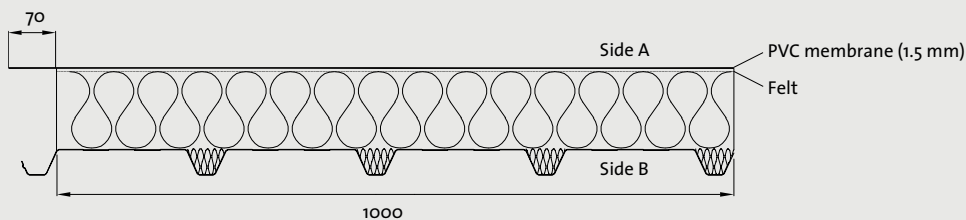
Panel Composition

Trimoterm SRV panels consist of both side galvanized, deep-profiled, painted steel sheet on the inner side, and a PVC (1.5 mm) waterproof membrane on the outer side. The steel sheet and the membrane are bonded to the panel which is made of non-combustible lamellated mineral wool of class A1 (EN ISO 1182).

Technical data

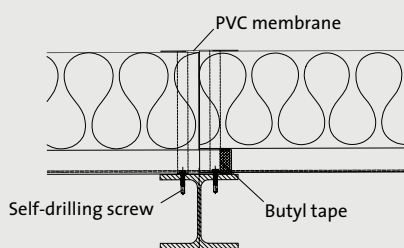
Inner profile:	deep-profiled 0.6 mm
Cover width:	1000 mm
Panel length:	up to 14 m
Panel thickness:	60, 80, 100, 120, 150, 200 mm

Panel Profile

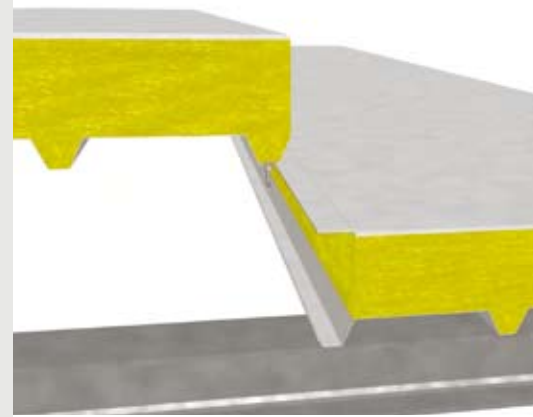


Roof Extension

For long roof slopes (the maximum length of a panel is 14 m) transverse extension of panels is required. Side lap joints as well as extension joints of waterproof membrane are site welded as shown on the detail below.



Construction of longitudinal joint SRV



Roof cross-section



Trimoterm SRV panel



www.trimo.si

Trimo, Engineering and Production of Pre-fabricated Buildings, d.d.
 Prijateljjeva cesta 12, 8210 Trebnje, Slovenia
 t: +386 7 34 60 200, f: +386 7 34 60 127
 e: trimo@trimo.si